



55D Tollemache Street, Wallasey, CH45 2LQ £425 Per Month



Nestled in the desirable area of Tollemache Street, Wallasey, this one-bedroom flat presents an excellent opportunity for those seeking a comfortable and convenient living space. Spanning an inviting 527 square feet, the flat boasts a well-proportioned reception room, perfect for relaxation or entertaining guests.

The bedroom offers a peaceful retreat, ideal for unwinding after a long day. The property also features a modern bathroom, ensuring all your essential needs are met with ease.

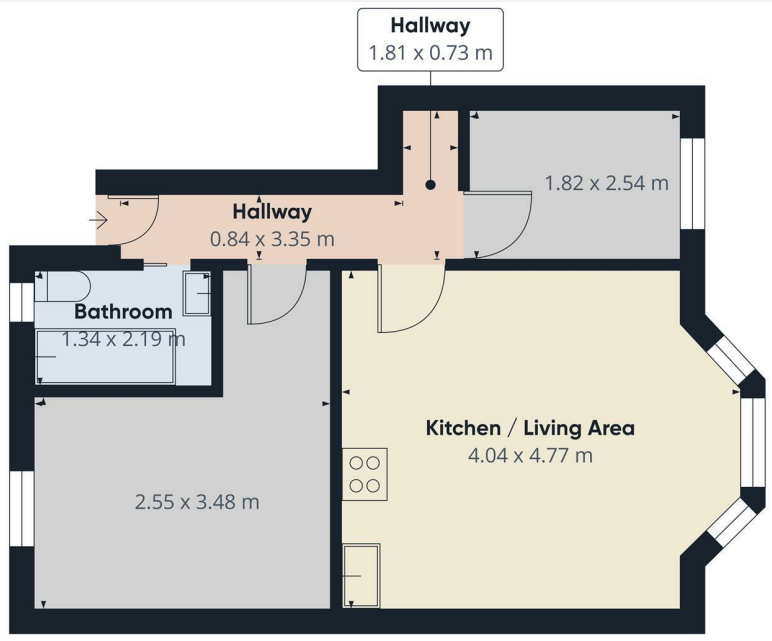
Situated in a sought-after location, residents will benefit from easy access to local amenities, including shops, cafes, and public transport links, making it an ideal choice for both professionals and couples.

This flat is not just a place to live; it is a home that combines comfort and practicality in a vibrant community. Do not miss the chance to make this delightful property your own.

- One Bedroom
- Apartment
- One Reception Room
- Kitchen
- Bathroom
- Sought After Location
- Double Glazing
- Gas Central Heating
- EPC Rating TBC

Viewing

To arrange a viewing on this property or require further information please contact one of our team on 0151 638 6313



Approximate total area*
40.4 m²

(1) Excluding balconies and terraces

Calculations reference the RICS IPMS 3C standard. Measurements are approximate and not to scale. This floor plan is intended for illustration only.

GIRAFFE360



Energy Efficiency Rating		
	Current	Potential
Very energy efficient - lower running costs		
(92 plus) A		
(81-91) B		
(69-80) C		
(55-68) D		
(39-54) E		
(21-38) F		
(1-20) G		
Not energy efficient - higher running costs		
England & Wales	73	
		EU Directive 2002/91/EC



These particulars, whilst believed to be accurate are set out as a general outline only for guidance and do not constitute any part of an offer or contract. Intending purchasers should not rely on them as statements of representation of fact, but must satisfy themselves by inspection or otherwise as to their accuracy. No person in this firm's employment has the authority to make or give any representation or warranty in respect of the property.

93-95 Wallasey Road, Wallasey, Merseyside, CH44 2AQ
T. 0151 638 6313 | E. sales@bakewellhorner.co.uk
<https://www.bakewellhorner.co.uk/>